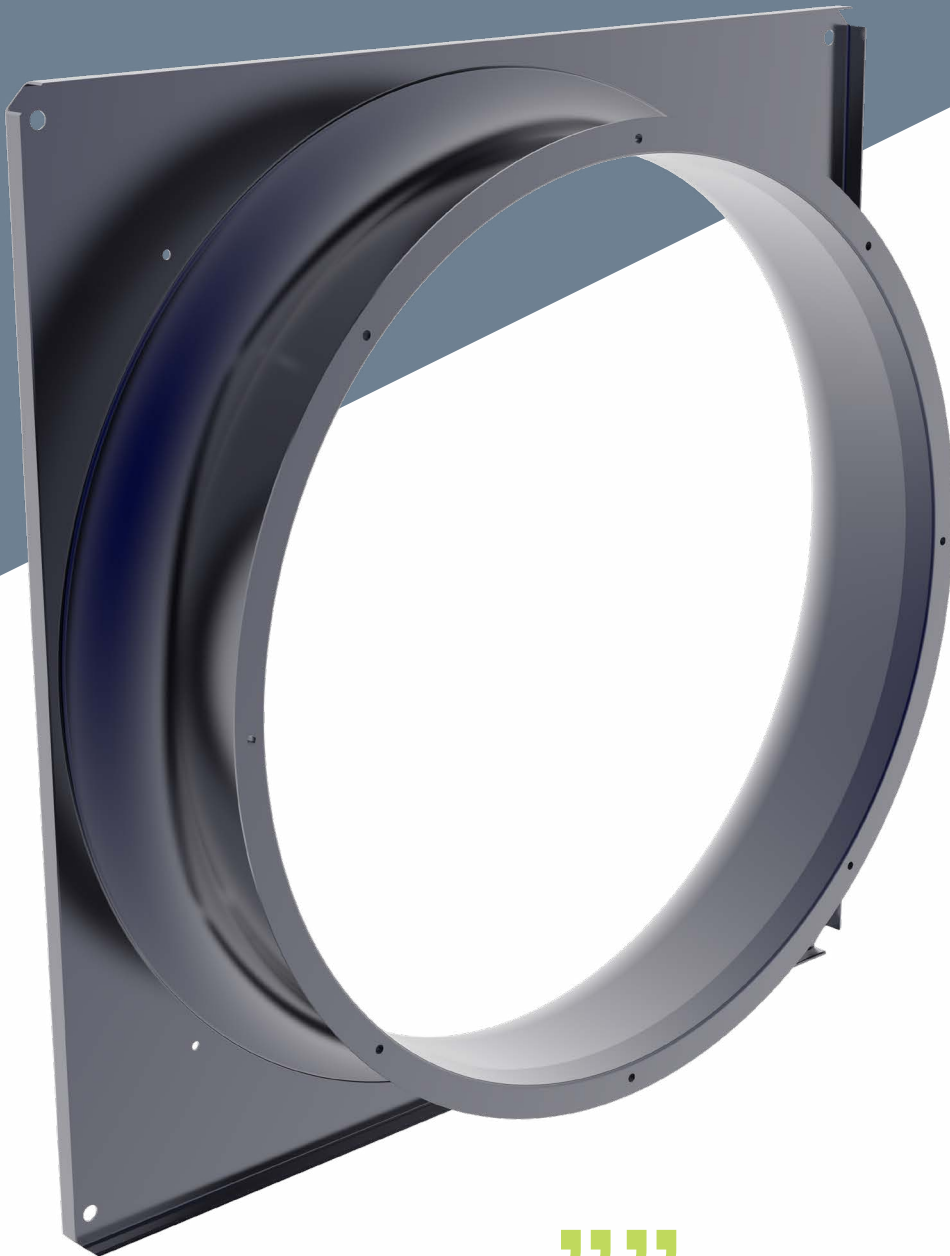
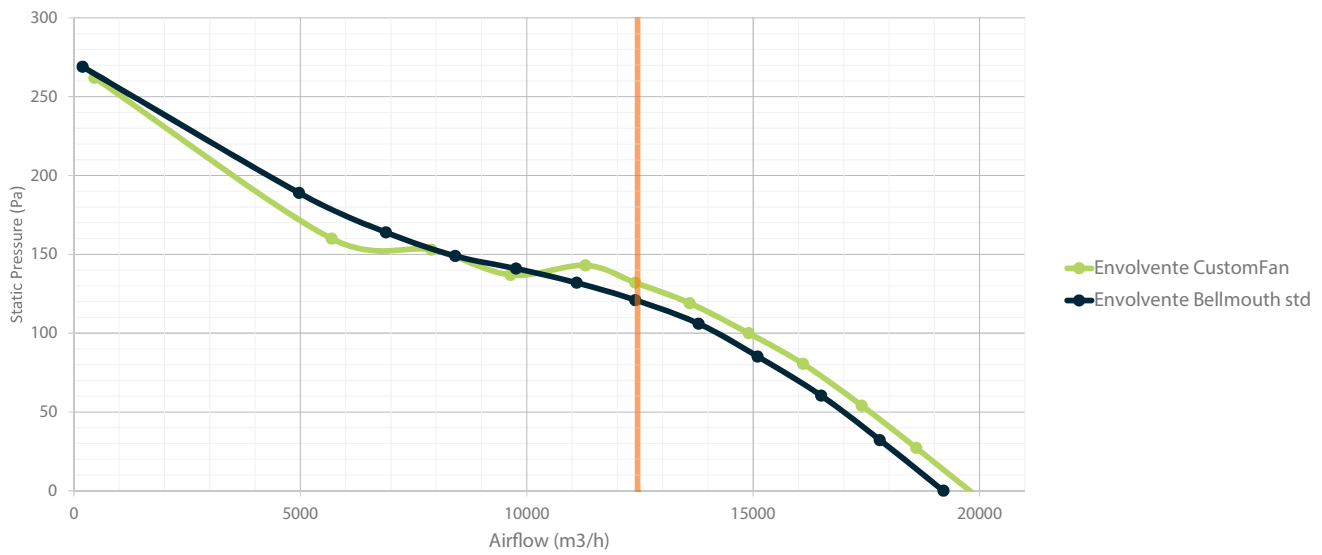


CUSTOMFAN FAN INLET'S

Optimized to improve the efficiency of the fan

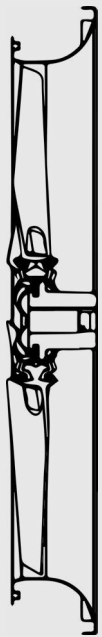


””” **CUSTOMFAN fan inlet's overcoming the performance of the standard Bellmouth inlet.**

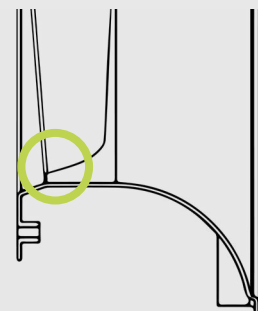
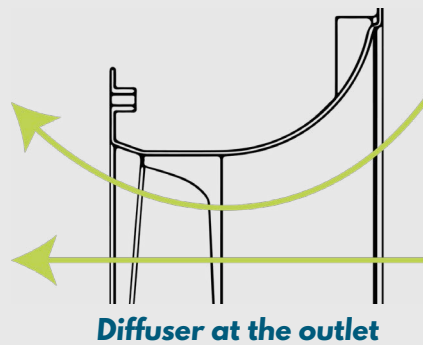


Comparison curves for impeller 792/7-7/35/AL/4Z between standard bellmouth inlet and the CUSTOMFAN inlet at 900 RPM. The table shows performances for the same airflow.

	Airflow (m3/h)	Static Pressure (Pa)	Sound (dB)	Efficiency (%)
Customfan inlet	12.500	131 (+5,6%)	79,6 (-4,1 dB)	68 (+4,6%)
Std Bellmouth inlet	12.500	124	83,7	65



CUSTOMFAN inlet



Trailing edge aligned with diffuser



Std Bellmouth inlet

The trailing edge at the tip of the blade must be aligned with the entrance point to the diffuser. By adding a diffuser, as a part of the fan inlet, and an optimal placement of the impeller you will get a better performance than with the standard bellmouth inlet.